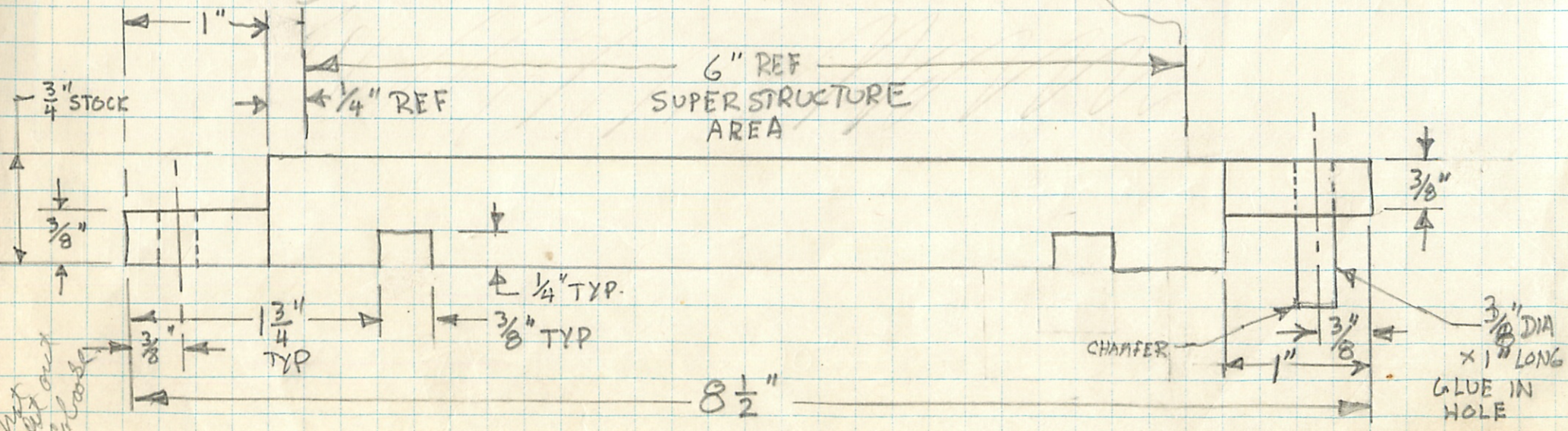
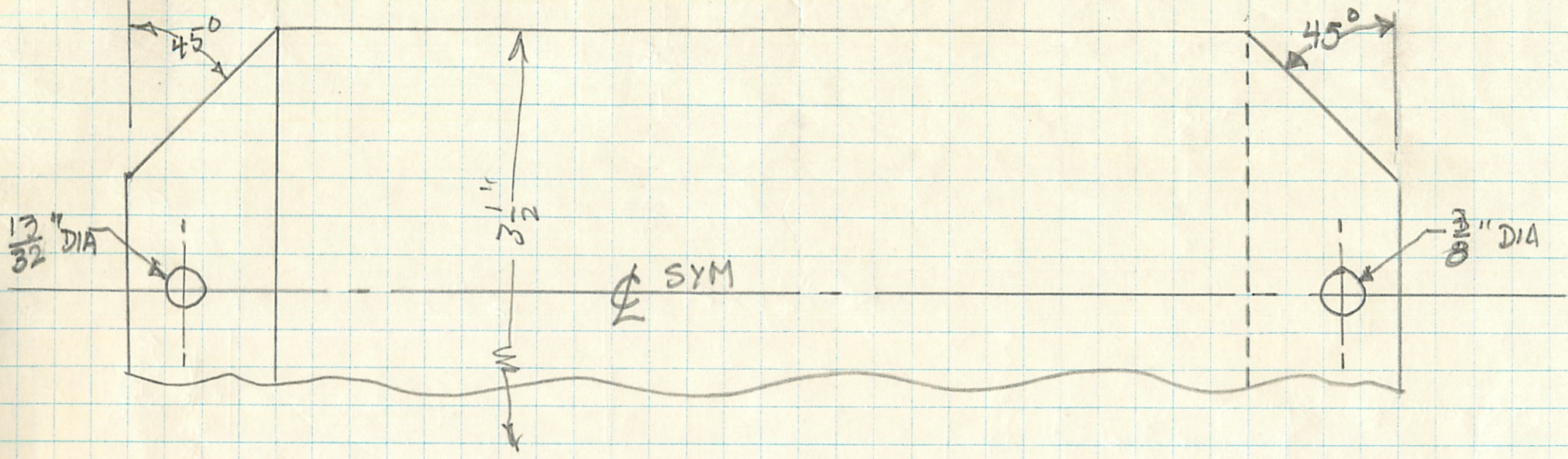


TRAIN ENGINE

FULL SCALE

1 REQ'D PER TRAIN.

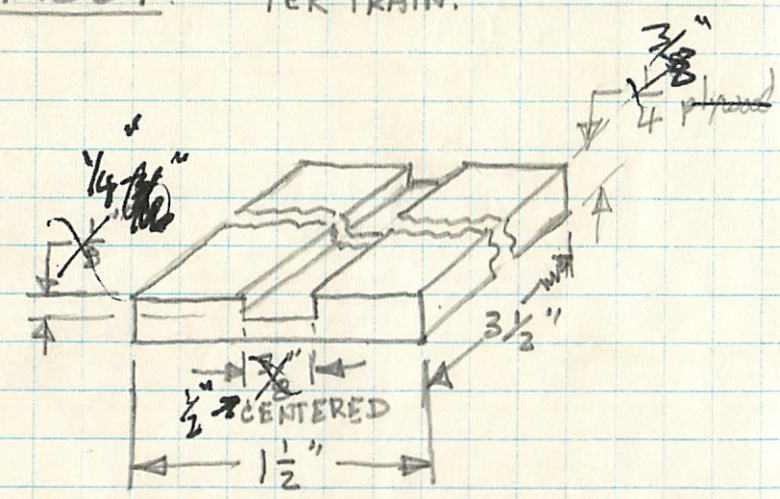
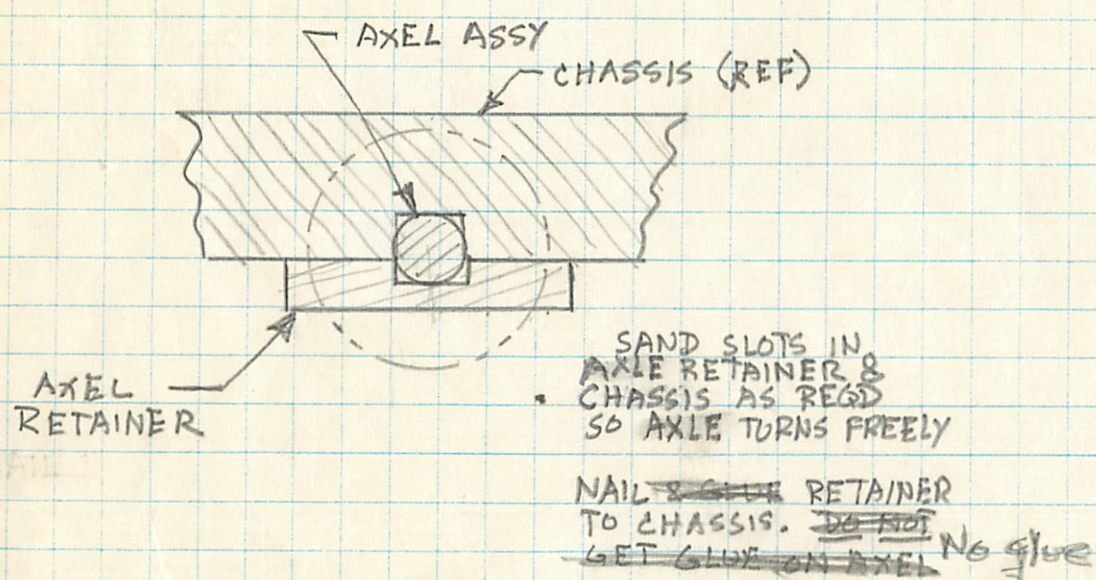
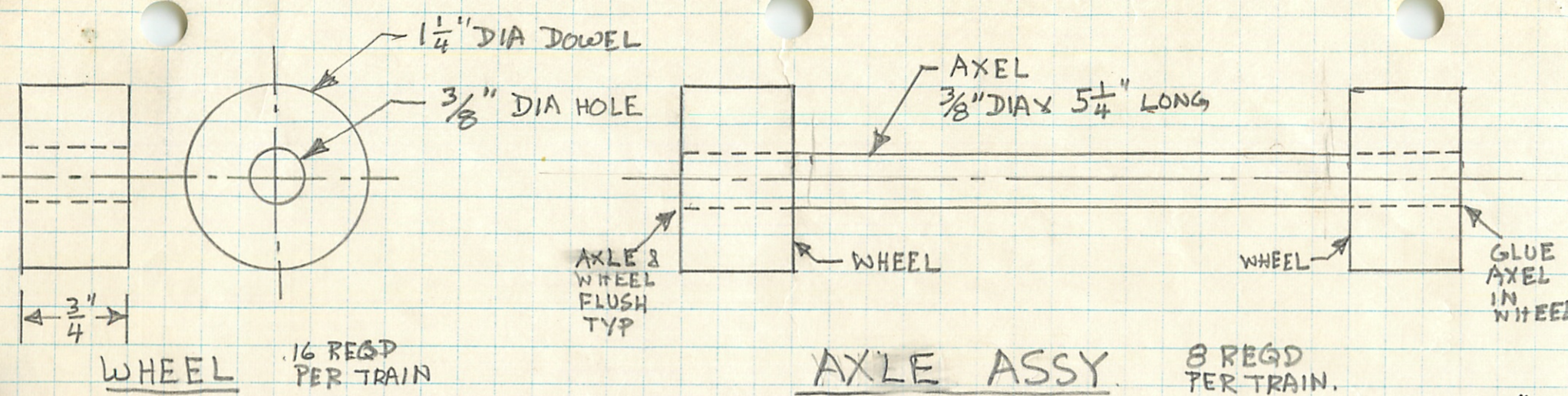


Not cut out
 for Glue

CAR CHASSIS

FULL SCALE

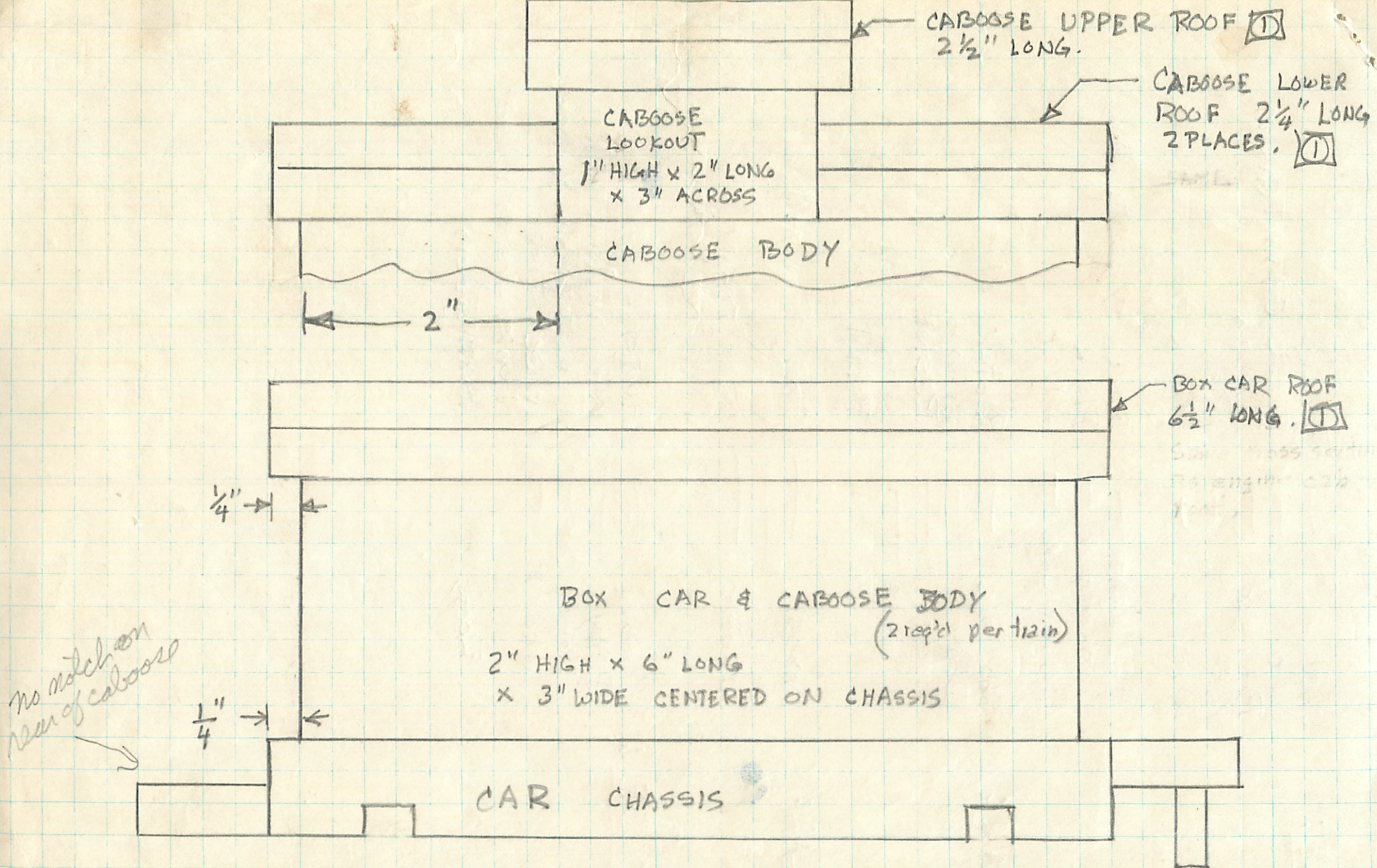
3 REQ'D PER TRAIN



AXLE INSTALLATION. 8 PLACES PER TRAIN

Paraffin on axles.

WHEEL/AXEL DETAILS & ASSY



CAR ASSY.

(OVER FOR PAINT SCHEME)

ENGINE:

Chassis	—	Black
Cab	—	Black Cat mint Green
Boiler	—	Brown
Roof	—	Red
Wheels	—	Black tread Red wheel
Headlight	—	Black w/ white lens
Smokestack	—	Black
Boiler caps	—	Black

BOXCAR:

Chassis	—	Pastel blue
Body	—	Brown
Roof	—	Pastel blue
Wheels	—	Black Tread Pastel blue wheel

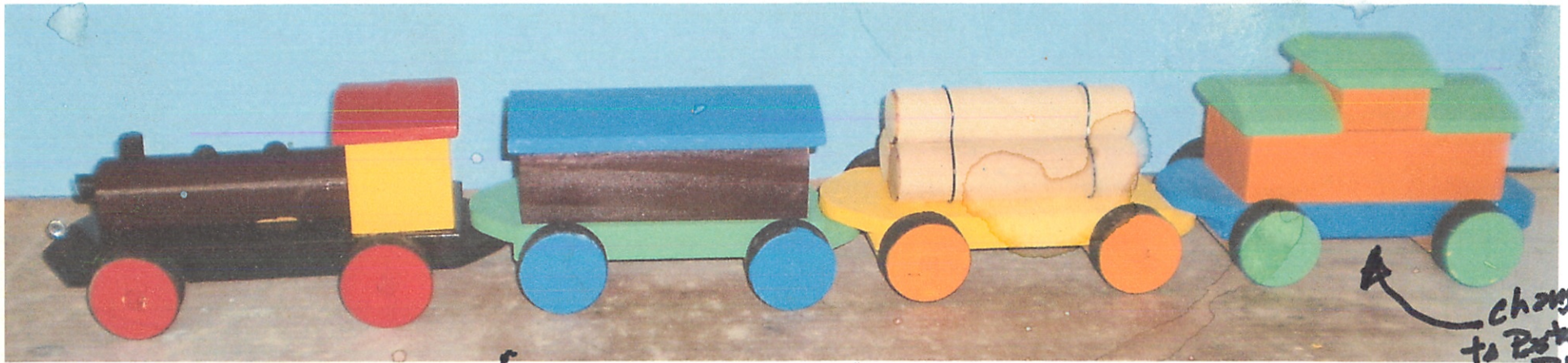
FLAT CAR:

Chassis	—	Orange or yellow
Logs	—	Natural
Wheels	—	Black tread Orange or yellow

CABOOSE:

Chassis	—	Hunter green
Body	—	Yellow
Lookout cab	—	Yellow
Wheels	—	Black tread Hunter green wheel
Roofs		Hunter green

TOY TRAIN 2013



ENGINE

Roof — Red
Cab — Yellow
Boiler — Brown
Chassis — Black
Wheels — Red
+ BLACK

BOX CAR

Roof - Royal Blue
Body - Brown
Chassis - Lt. Green
Wheels - Royal Blue

FLAT CAR

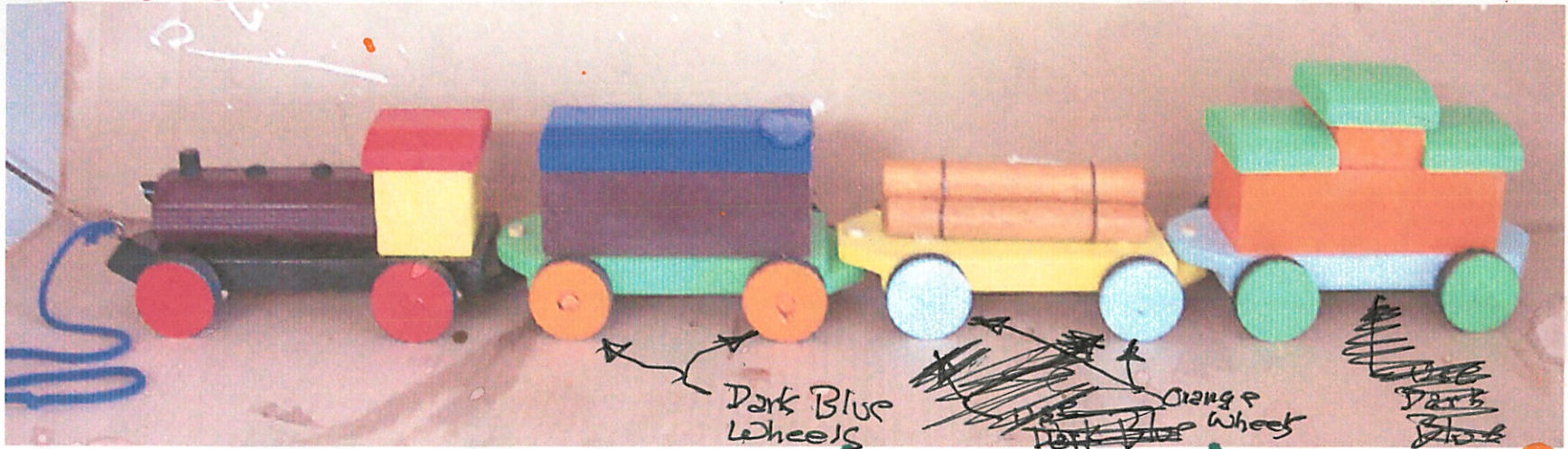
Load - Varnish
Chassis - Yellow
Wheels - Orange

CABOOSE

Roof — Lt. Green
Body — Orange
Chassis - Pastel Blue
Wheels - Lt. Green

change to Pastel Blue

TOY TRAIN COLOR SCHEME



ENGINE

Wheels - red & black

Chassis - black

Roof - red

Boiler - brown

Cab - yellow

Smokestack - black

Boiler lids - black

Headlight - black & white

BOX CAR

Wheels - orange & black

Chassis - ~~Mint Green~~
Clover Mist

Roof - Brilliant blue

Body - Brown

LOGGING CAR

Wheels - ~~Pastel blue~~
Dark blue & black

Chassis - yellow

Logs - Natural
(Varnish)

CABOOSE

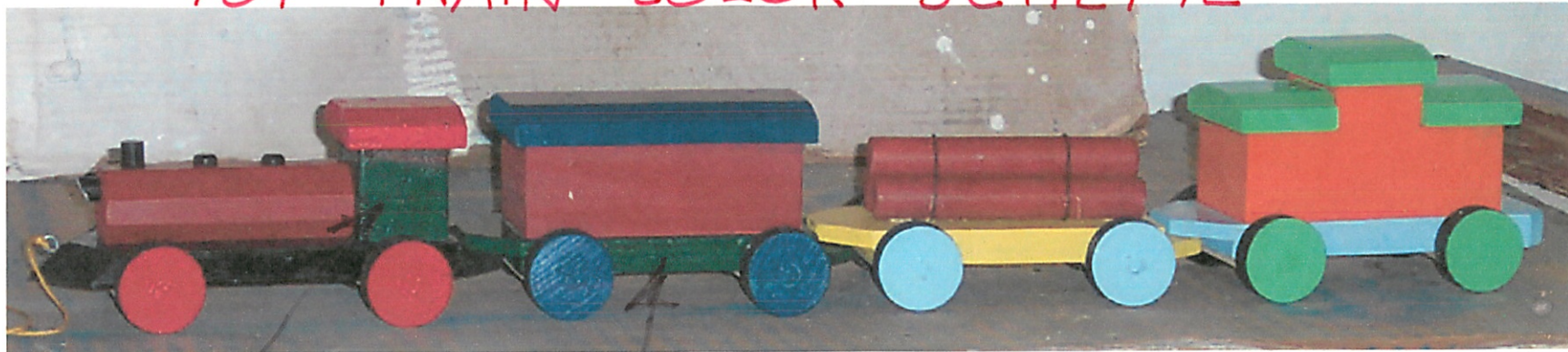
Wheels - ~~Mint Green~~
Clover Mist & black

Chassis - Pastel blue

Roof - ~~Mint Green~~
Clover Mist

Body - Orange

TOY TRAIN COLOR SCHEME



ENGINE

Wheels - red & black

Chassis - black

Roof - red

Boiler - redwood
or brown

Cab - ~~forest green~~
pineapple yellow

Smokestack - black

Boiler lids - black

Headlight - black & white

BOX CAR

Wheels - ~~royal blue~~
^{orange} & black

Chassis - ~~forest green~~
^{mint}

Roof - ~~royal blue~~
^{brilliant}

Body - brown primer
or boxcar red

LOGGING CAR

Wheels - pastel blue
& black

Chassis - ~~pineapple~~
yellow

Logs - redwood
or brown

Spray Varnish
Polyurethane

CABOOSE

Wheels - ~~mint~~
^{catnip} green
& black

Chassis - pastel
blue

Roof - catnip
green

Body - orange

